

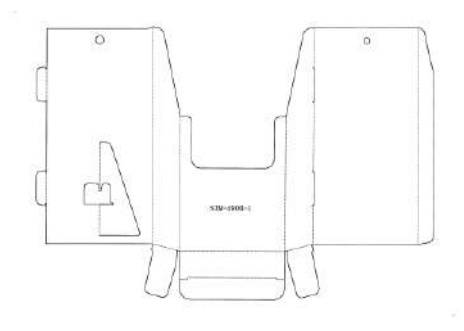
## 自立 (スタンド)

脚部や本体部切取等により箱を自立させる

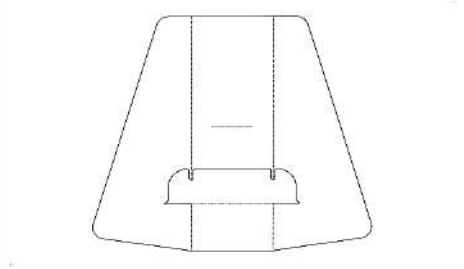
形態種別

- ①脚部 切欠け
- ②脚部 追加パーツ
- ③開封二つ折り
- ④レンジ用 切取部利用
- ⑤その他

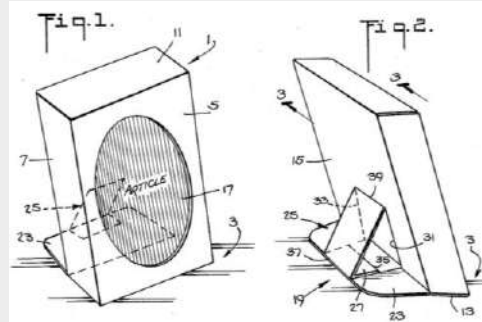
背立付き陳列箱



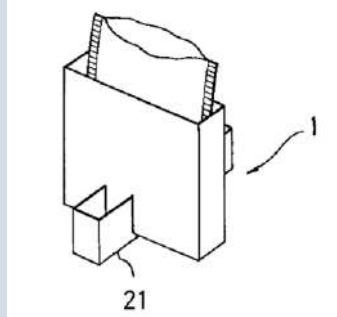
背立 パネル等に貼付



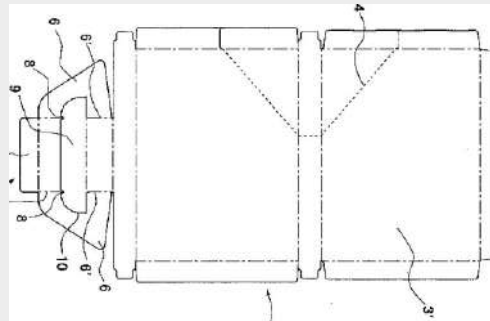
1



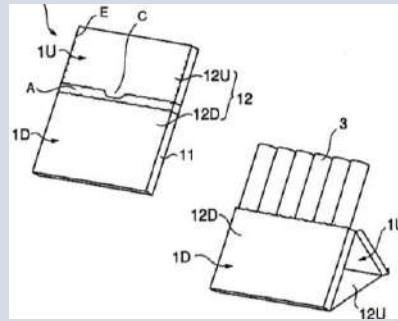
2



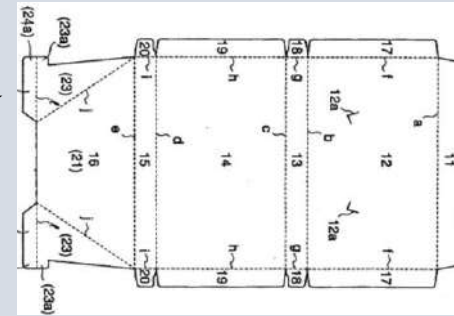
3



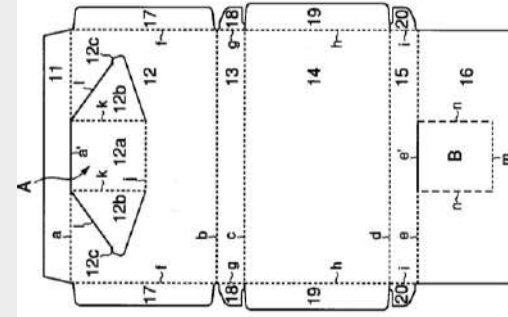
4



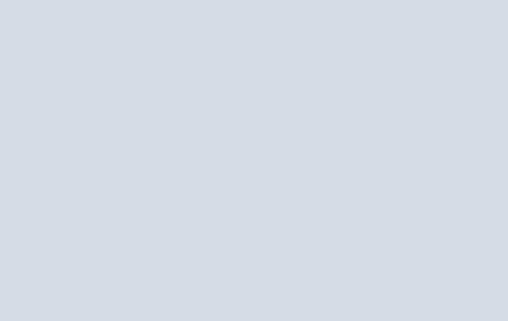
5



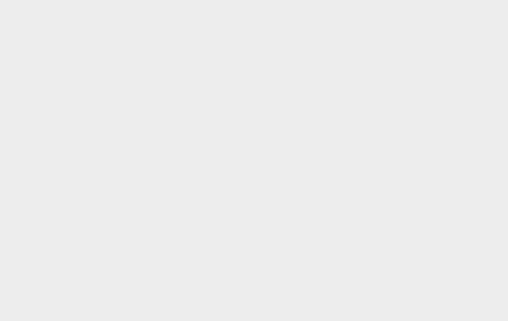
6



7



8



9

10

11

12